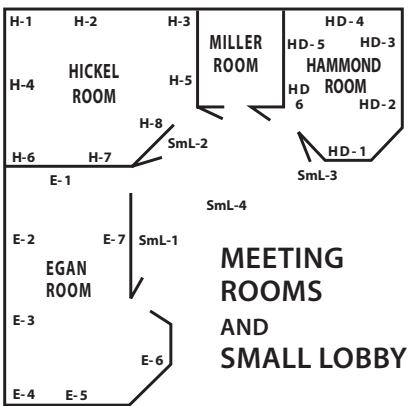
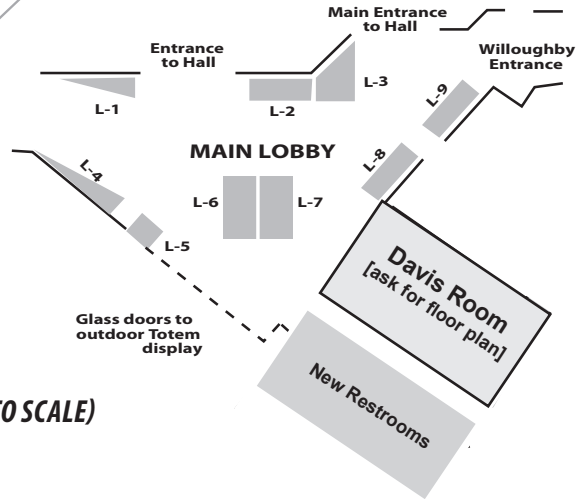
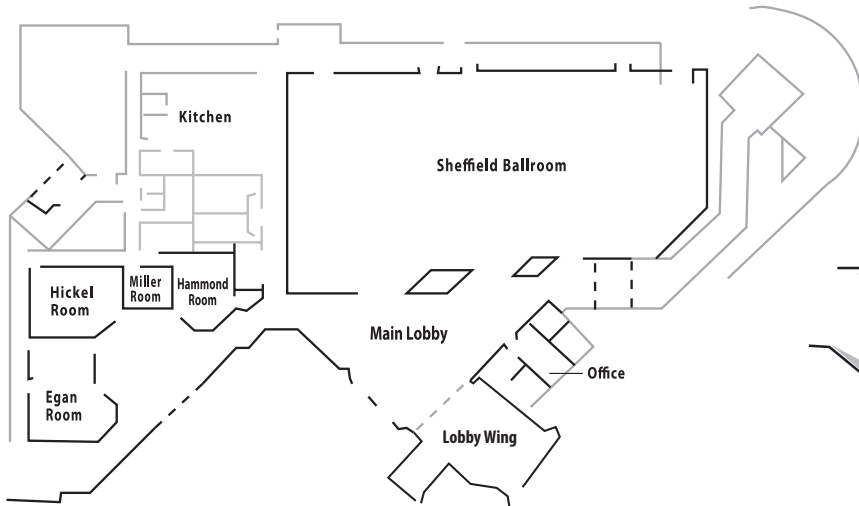


THE THIRTY-THIRD ANNUAL PUBLIC MARKET

CENTENNIAL HALL FLOOR PLANS

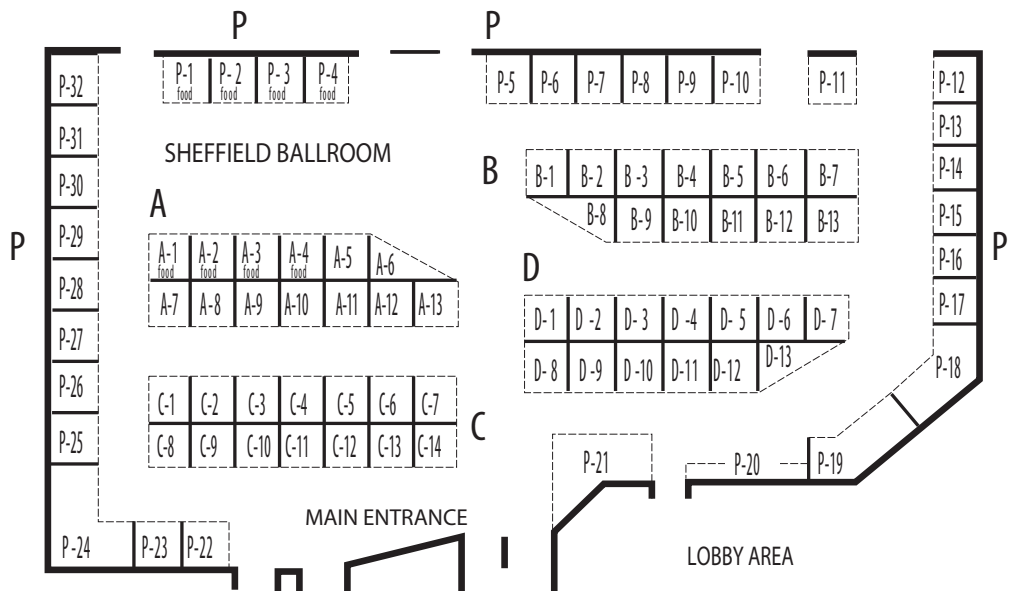


(THESE DIAGRAMS ARE NOT TO SCALE)

All space rentals in the Sheffield Ballroom are booths, constructed of panels (1/8" pegboard mounted on 2" x 2" frames), typically 8' x 8' by 6' tall. Solid lines represent panels that form the sidewalls of the booth, while dotted lines represent open sides. All "Prime" and "End Corner" booths have two open sides. All space rentals in lobby areas and meeting rooms are table displays (not enclosed by booth partitions). Rental rates are determined by location and square footage.

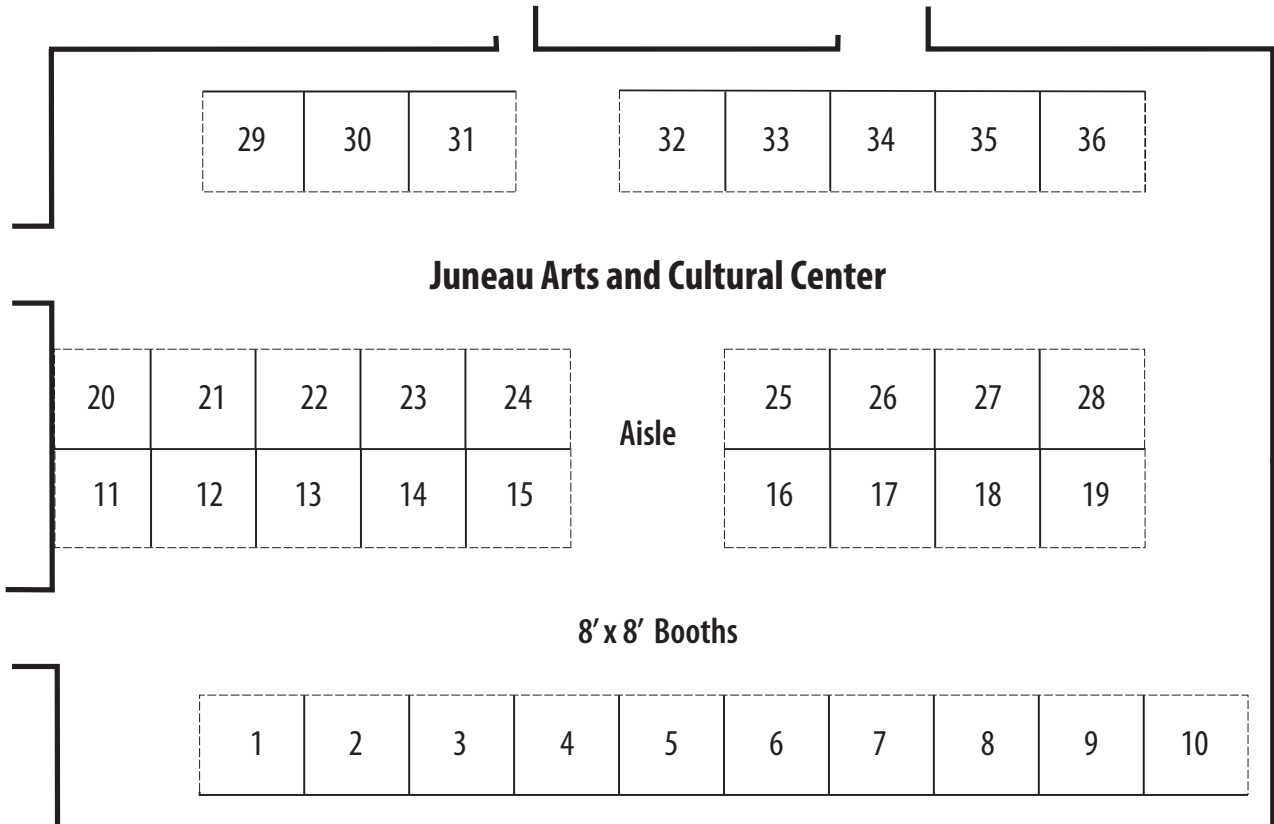
LETTER CODE

- SHEFFIELD BALLROOM:**
- STANDING SECTIONS = A, B, C, D
- PERIMETER = P
- MAIN LOBBY = L**
- DAVIS ROOM = DV**
- SMALL LOBBY = SML**
- EGAN = E**
- HICKEL = H**
- HAMMOND = HD**
- PUBLIC MARKET ANNEX = ANX**



THE THIRTY-THIRD ANNUAL PUBLIC MARKET

PUBLIC MARKET ANNEX (ANX) JUNEAU ARTS AND CULTURE CENTER (JACC) FLOOR PLANS



This photo was taken from the perspective of the corner next to space #29

Each Annex booth is defined by pipe frame & drape separators, with sidewalls that are approximately 3' high. Perimeter booths have an 8' high back, while the center section booths do not. Creative use of each space is encouraged, but please let us know your intentions prior to the event.